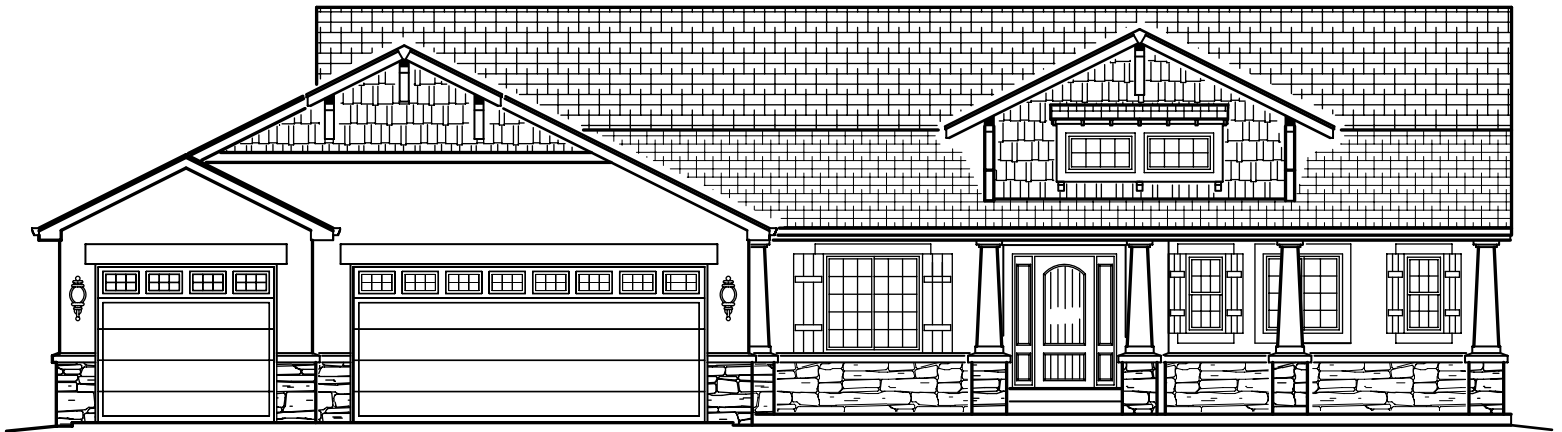


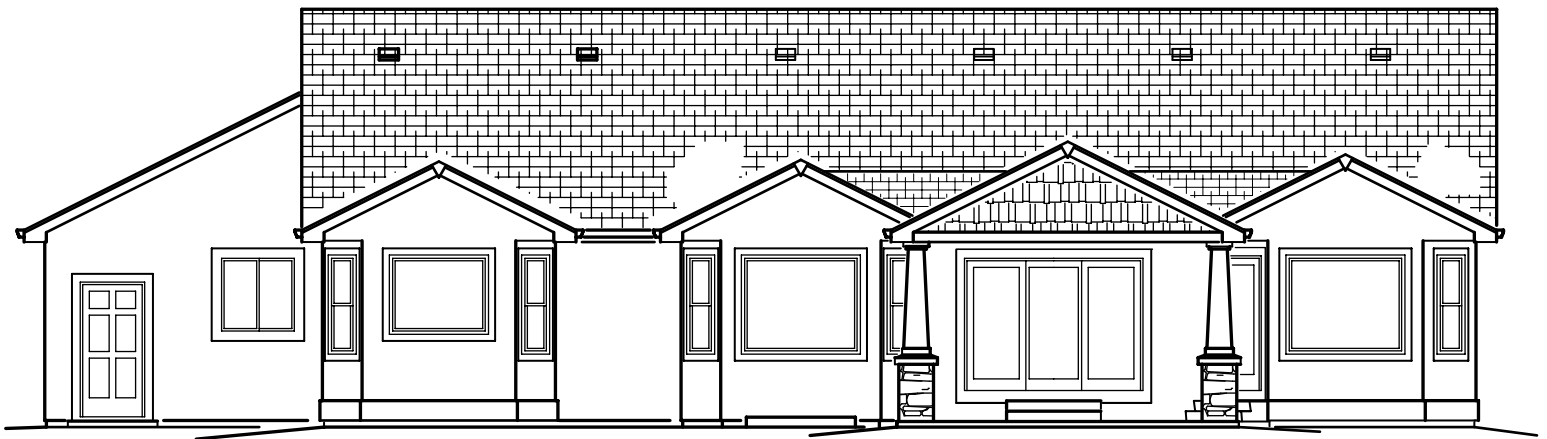
# The Tarah Deluxe

BY MAJESTIC CUSTOM HOMES



Standard 4-Car Garage  
(Additional Garage Bays Optional)

FRONT



(Patio Cover Optional)

BACK

**Main Level = 2,238 sq. ft.**

**Basement = 2,132 sq. ft.**

**Total = 4,370**

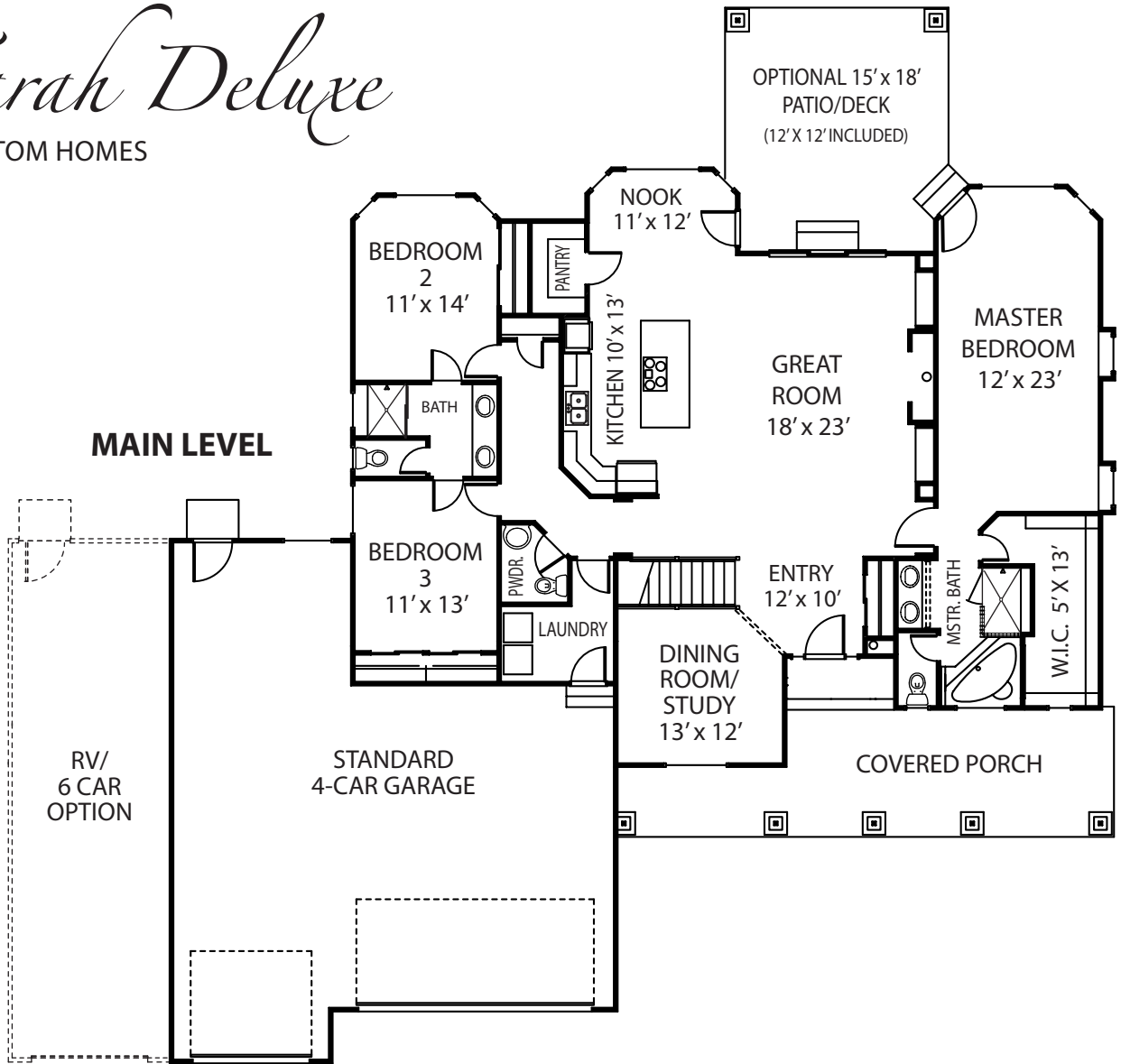
Large, open ranch plan with 3 bedrooms, 2.5 baths, formal dining or study, open kitchen with nook, and many optional features. Basement finish adds 2 bedrooms, 1 bathroom, family room and other options as requested.

**For more information call 719.492.0685**

**Majestic**  
custom homes, inc

# The Tarah Deluxe

BY MAJESTIC CUSTOM HOMES



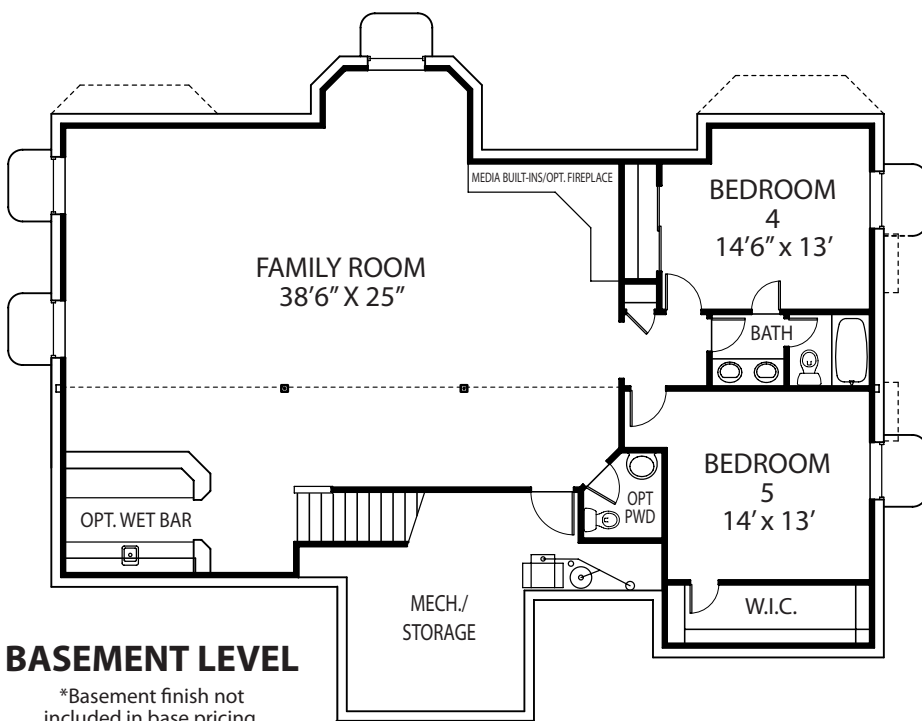
**Main Level = 2,238 sq. ft.**  
**Basement = 2,132 sq. ft.**  
**Total = 4,370**

Large, open ranch plan with 3 bedrooms, 2.5 baths, formal dining or study, open kitchen with nook, and many optional features. Basement finish adds 2 bedrooms, 1 bathroom, family room and other options as requested.

**For more information call 719.492.0685**



© Majestic Custom Homes, Inc. All rights reserved. Plan changes and options may result in additional charges at builder's discretion. All references to square footage are approximate. Plans, pricing and features subject to change without notice or obligation.



## BASEMENT LEVEL

\*Basement finish not included in base pricing.