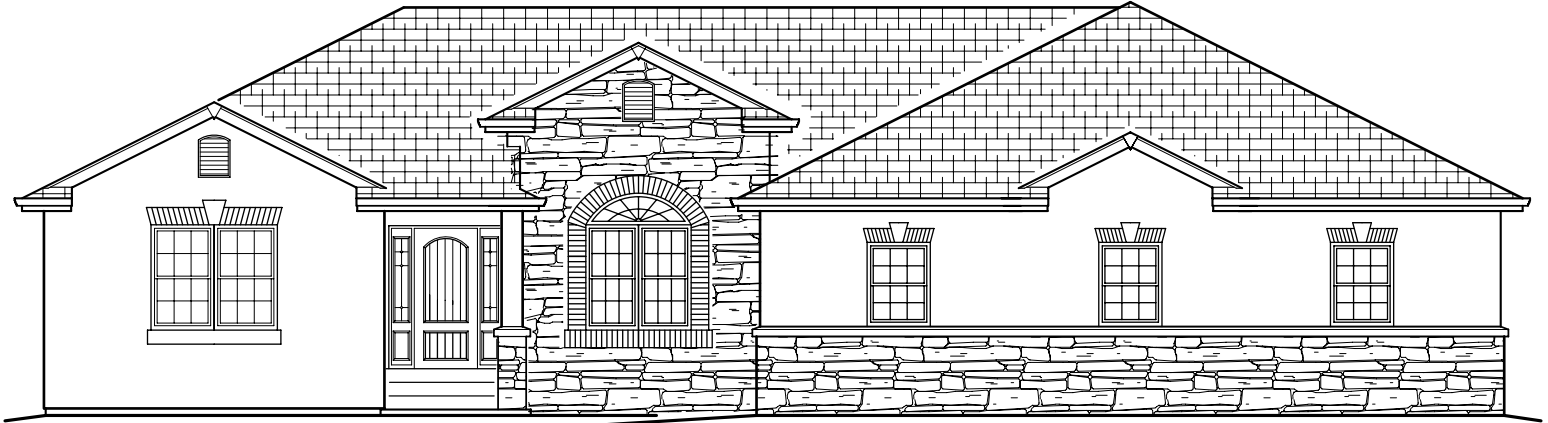


The Tiffany

BY MAJESTIC CUSTOM HOMES



FRONT

Standard 4-Car Side Entry Garage
(Additional Garage Bays Optional)



BACK

*Patio Cover Optional

Main Level = 1,915 sq. ft.

Basement = 1,866 sq. ft.

Total = 3,781

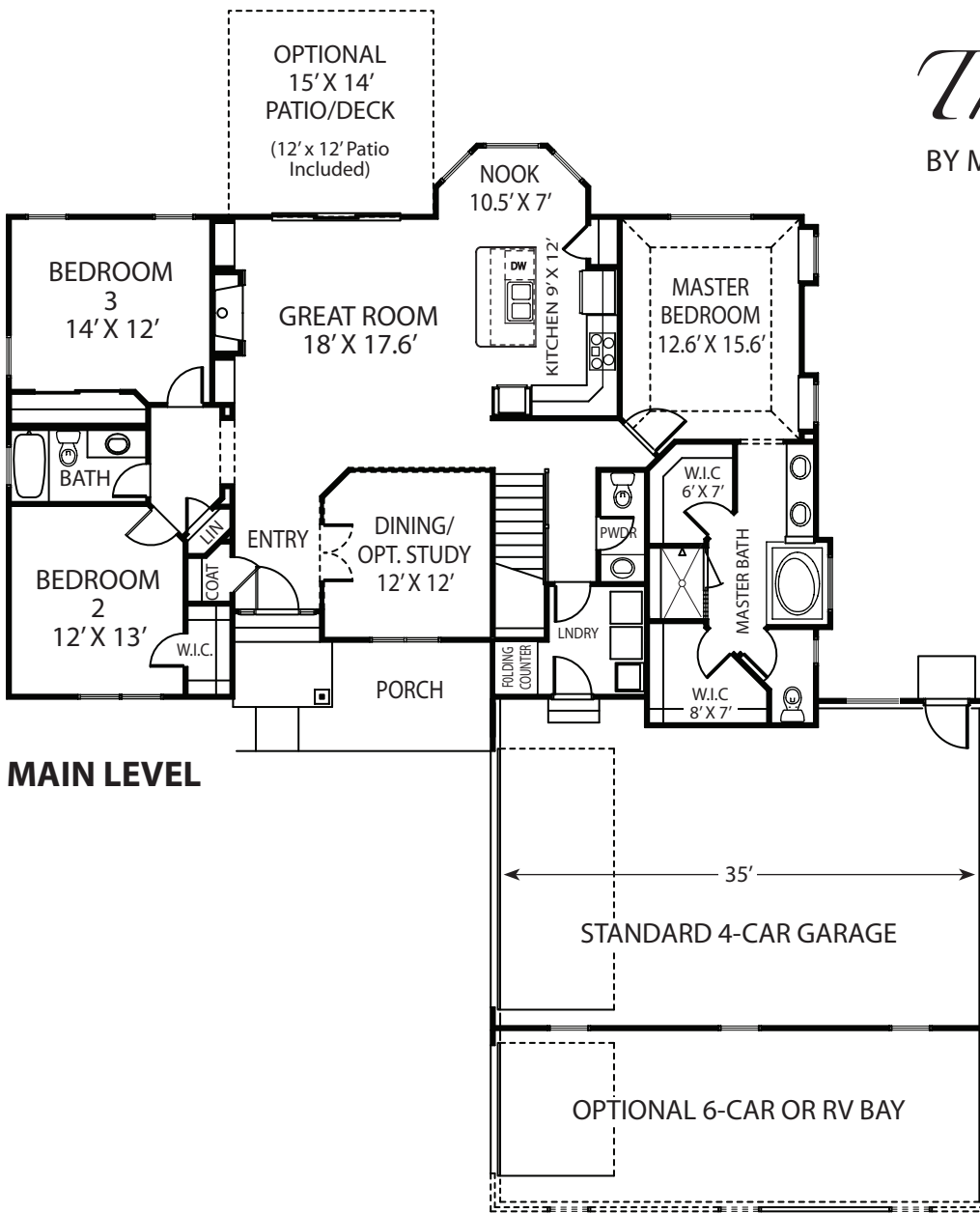
Contemporary ranch plan with side-entry garage, large master suite with his & hers walk-in closets, powder room, laundry room with sink and clothes folding counter, vaulted ceilings and open kitchen with dining nook. Basement finish adds 2 bedrooms, 1 bathroom, family room and other options as requested.

For more information call 719.492.0685

Majestic
custom homes, inc

The Tiffany

BY MAJESTIC CUSTOM HOMES

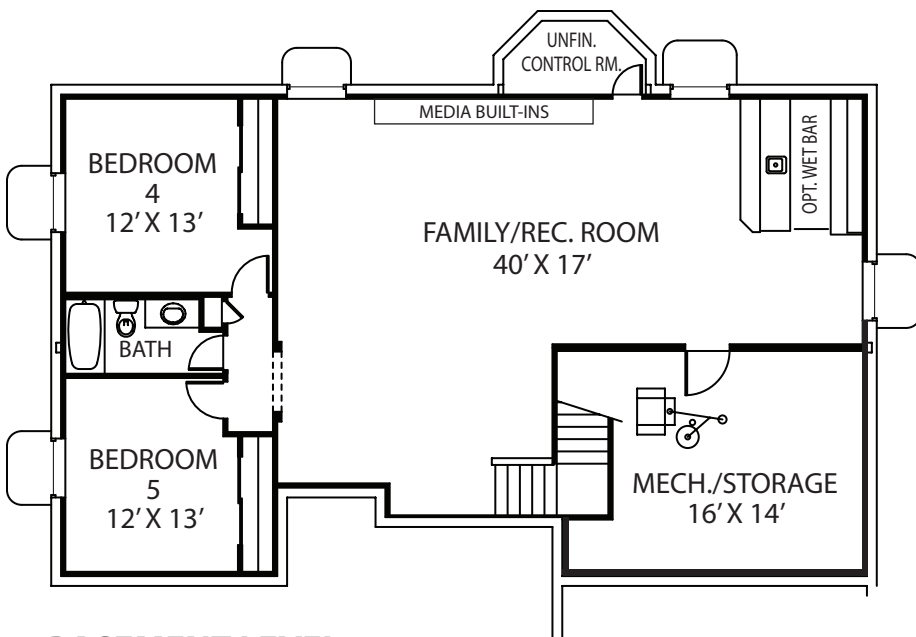


MAIN LEVEL

Main Level = 1,915 sq. ft.
Basement = 1,866 sq. ft.
Total = 3,781

Contemporary ranch plan with side-entry garage, large master suite with his & hers walk-in closets, powder room, laundry room with sink and clothes folding counter, vaulted ceilings and open kitchen with dining nook. Basement finish adds 2 bedrooms, 1 bathroom, family room and other options as requested.

For more information call 719.492.0685



BASEMENT LEVEL

*Basement finish not included in base pricing.



© Majestic Custom Homes, Inc. All rights reserved. This is a preliminary plan version and may vary when built. Plan changes and options may result in additional charges at builder's discretion. All references to square footage are approximate. Plans, pricing and features subject to change without notice or obligation.