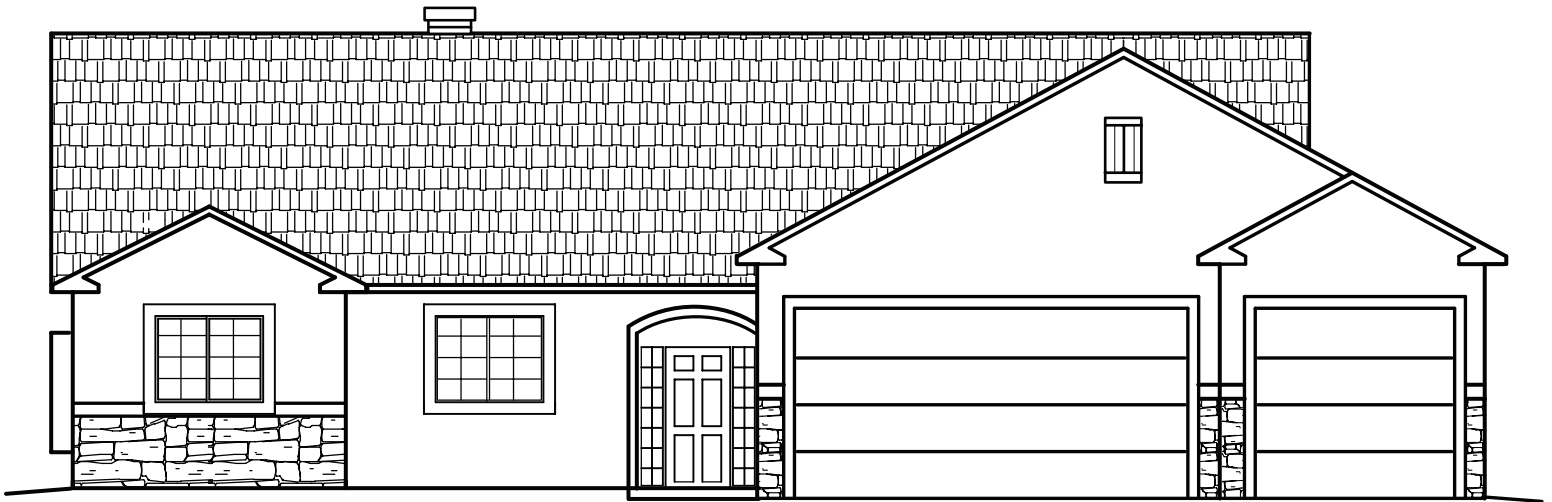


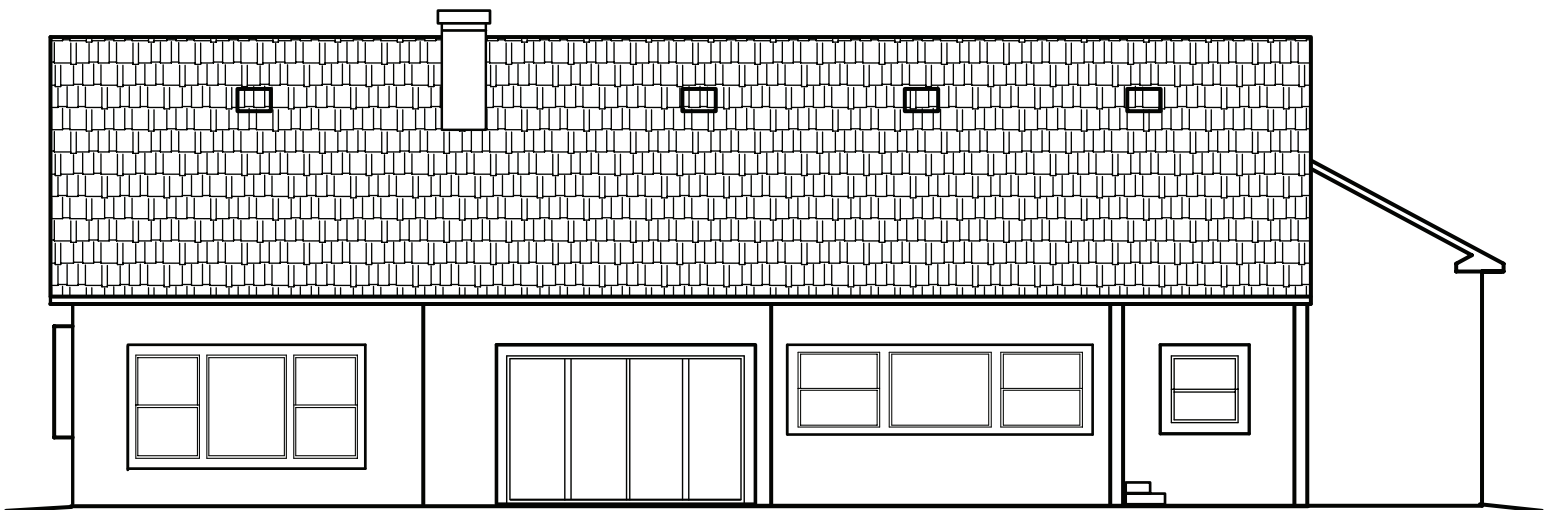
# The Villa

BY MAJESTIC CUSTOM HOMES



**FRONT**

Standard 4-Car Garage  
(Additional Garage Bays Optional)



**BACK**

**Main Level = 1,890 sq. ft.**

**Basement = 1,890 sq. ft.**

**Total = 3,780**

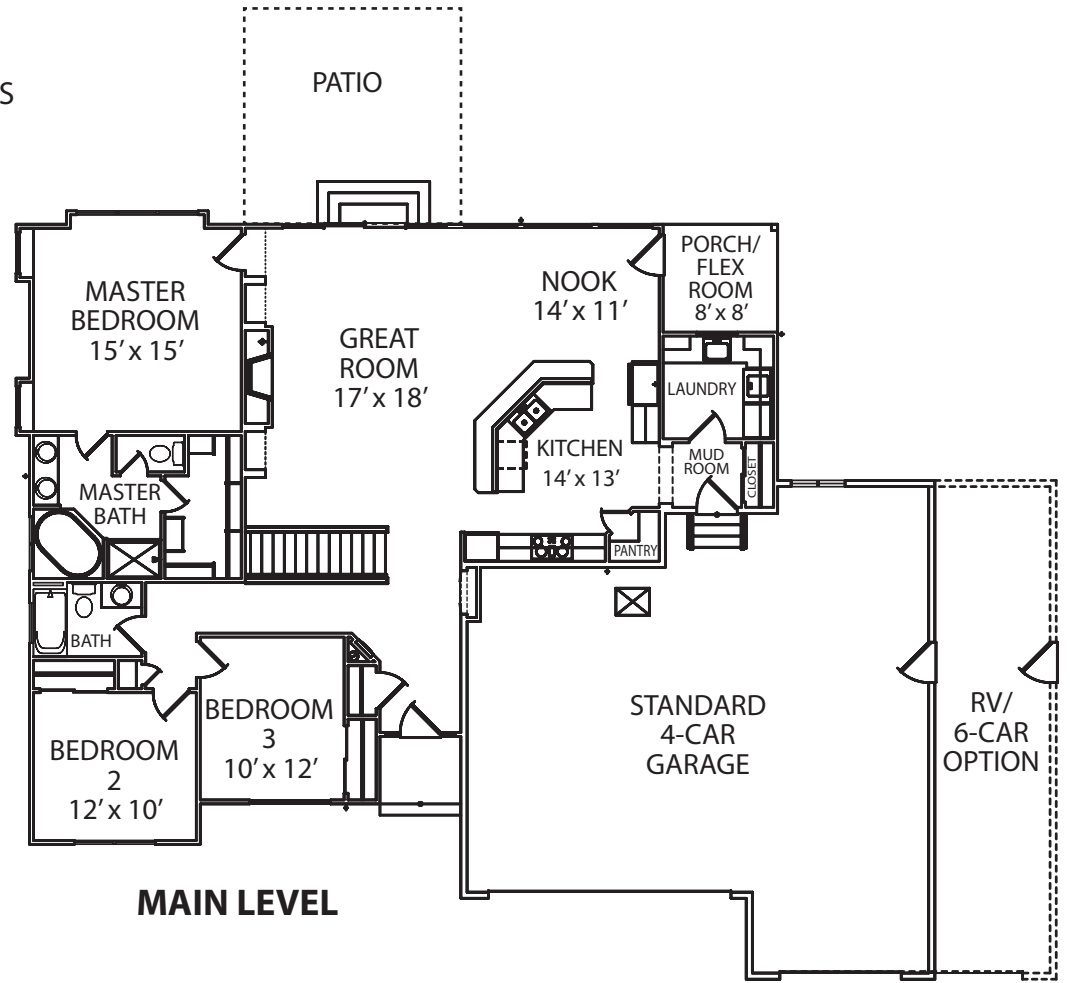
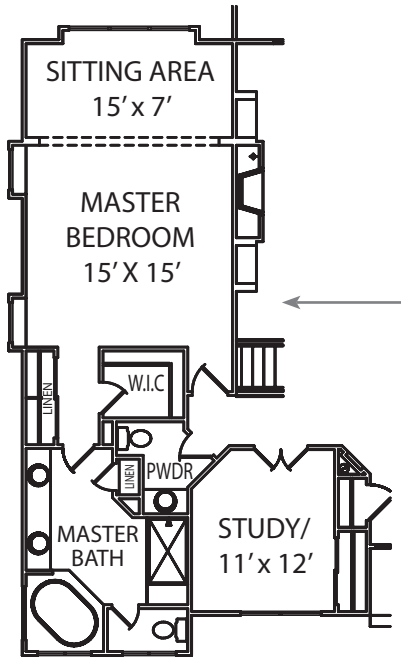
Flexible ranch plan with 2-3 bedrooms upstairs and study option, 2 baths, spacious dining nook, option for covered front porch, side porch or flex room, and many other optional features. Basement finish adds 2 bedrooms, 1 bathroom, family room and other options as requested.

**For more information call 719.492.0685**

**Majestic**  
custom homes, inc

# The Villa

BY MAJESTIC CUSTOM HOMES



**Main Level = 1,890 sq. ft.**  
**Basement = 1,890 sq. ft.**  
**Total = 3,780**

Flexible ranch plan with 2-3 bedrooms upstairs and study option, 2 baths, spacious dining nook, option for covered front porch, side porch or flex room, and many other optional features. Basement finish adds 2 bedrooms, 1 bathroom, family room and other options as requested.

For more information call 719.492.0685



© Majestic Custom Homes, Inc. All rights reserved. Plan changes and options may result in additional charges at builder's discretion. All references to square footage are approximate. Plans, pricing and features subject to change without notice or obligation.

